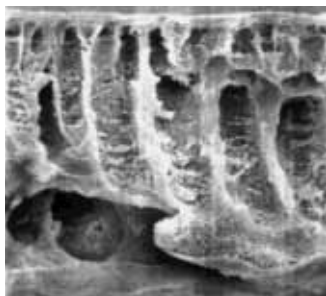


## Ultrafiltration Membrane Filters from PES 146..., CTA 145... and RC 144... for the Concentration, Purification and Removal of Proteins



### Polyethersulfone (PES)

This is a general purpose membrane that provides excellent performance with most solutions when retentate recovery is of primary importance. Polyethersulfone membranes exhibit no hydrophobic or hydrophilic interactions and are usually preferred for their low fouling characteristics, exceptional flux and broad pH range.

### Regenerated cellulose (RC)

Membrane are also highly hydrophilic and are often preferred for their higher protein recovery when processing some very dilute solutions. Resistance to autoclaving, ease of cleaning and extended chemical resistance also characterises this type of membrane.

### Cellulose triacetate (CTA)

High hydrophilicity and very low non specific binding characterise this membrane. Cast without any membrane support that could trap or bind passing micro solutes, these membranes are to be preferred for sample cleaning and protein removal and when high recovery of the filtrate solution is of primary importance.

#### Typical performance for polyethersulfone, type 146

Thickness	120 $\mu\text{m}$	
pH range	1–14	
Waterflux	MWCO 10,000	0.2 ml/min/cm <sup>2</sup>
Protein retention	Cytochrome C	95%

#### Specifications for cellulose triacetate, type 145

Thickness	120 $\mu\text{m}$	
pH range	4–8	
Waterflux	MWCO 10,000	0.11 ml/min/cm <sup>2</sup>
Protein retention	Cytochrome C	90%

#### Specifications for regenerated cellulose, type 144

Thickness	180 $\mu\text{m}$	
pH range	1–13	
Waterflux	MWCO 10,000	0,08 ml/min/cm <sup>2</sup>
Protein retention	Cytochrome C	99%

Order numbers see next page.

**Order numbers for polyethersulfone membrane filters, type 146**

---

47 mm diameter	14609-047 D	1.000 MWCO, pack of 10
	14629-047 D	5.000 MWCO, pack of 10
	14639-047 D	10.000 MWCO, pack of 10
	14659-047 D	30.000 MWCO, pack of 10
	14650-047 D	50.000 MWCO, pack of 10
	14668-047 D	100.000 MWCO, pack of 10
	14679-047 D	300.000 MWCO, pack of 10

**Order numbers for cellulose triacetate membrane filters, type 145**

---

47 mm diameter	14529-047 D	5.000 MWCO, pack of 10
	14539-047 D	10.000 MWCO, pack of 10
	14549-047 D	20.000 MWCO, pack of 10
	14549-047 N	20.000 MWCO, pack of 100

**Order numbers for regenerated cellulose membrane filters, type 144**

---

47 mm diameter	14429-047 D	5.000 MWCO, pack of 10
	14439-047 D	10.000 MWCO, pack of 10
	14459-047 D	30.000 MWCO, pack of 10